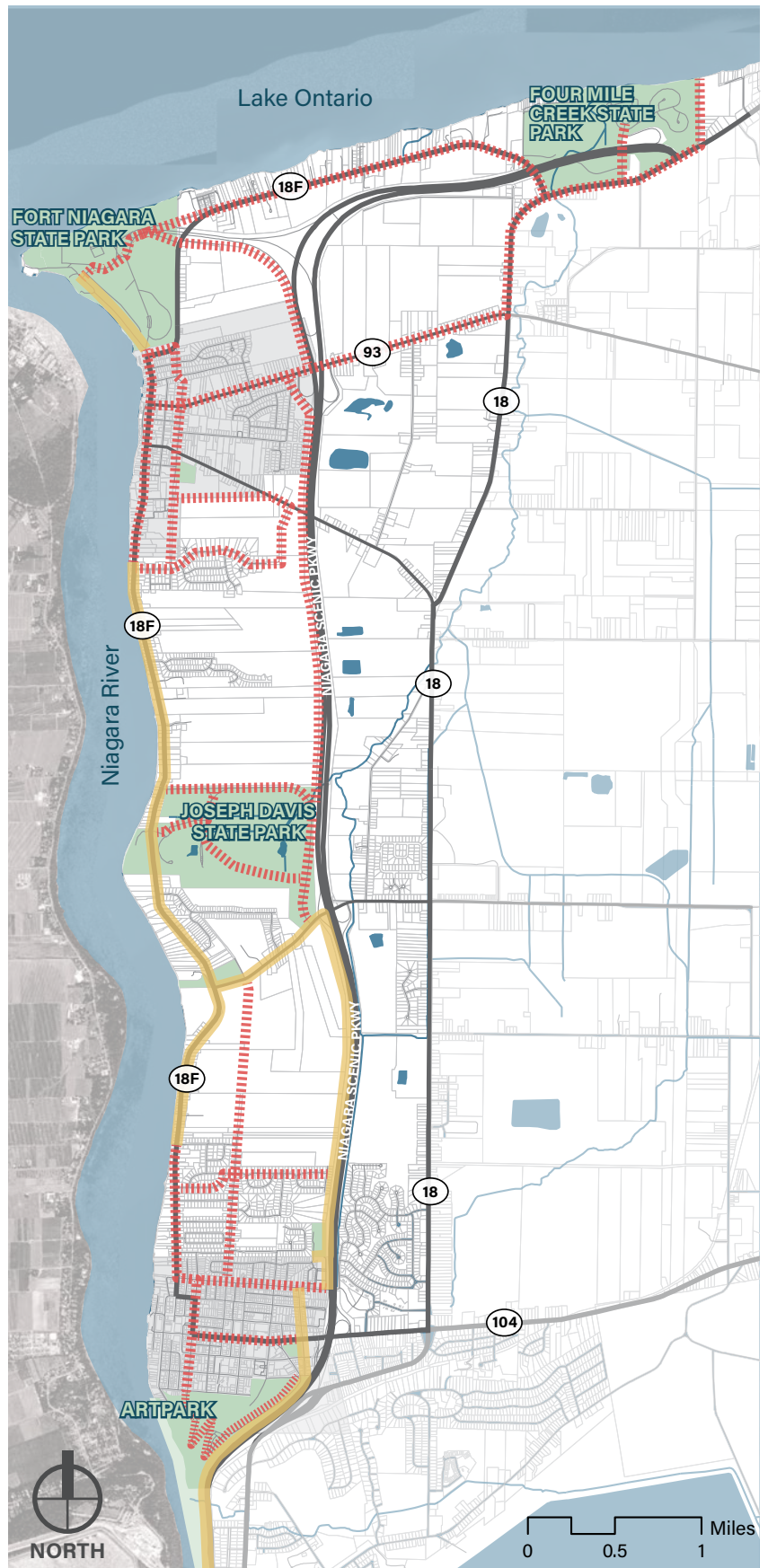


# LOWER NIAGARA RIVER SHORELINE TRAIL CONNECTIVITY STUDY

The purpose of the Lower Niagara Shoreline Trail Connectivity Study is to identify and evaluate feasible opportunities for safe and enjoyable multi-modal connections between Artpark in the Village of Lewiston to Four Mile Creek State Park along the Lake Ontario shoreline. The study will explore a range of different alternatives that may be advanced in later design phases and will build upon related and interconnected efforts to support the development of a strong regional multi-modal system.

As part of the Study, a series of biking and walking tours are being conducted throughout the study area to help the public experience the proposed multi-modal facilities firsthand.

To learn more about the Study and to provide feedback to the project team, please visit: <https://lowerniagaratrailstudy.com/>



Existing Trail Facilities

Proposed Trail Facilities



WALKING TOUR OF THE PROPOSED LOWER NIAGARA SHORELINE TRAIL

# VILLAGE OF LEWISTON

We're thrilled that you're joining us for a walking tour to experience the proposed Lower Niagara Shoreline Trail routes through the Village of Lewiston. The tour will help you envision proposed multi-modal facilities and give you the opportunity to provide feedback on the future trail system.



**MEETING LOCATION:**  
NE CORNER OF ACADEMY PARK



**DISTANCE:**  
1.5 MILES



**APPROX. DURATION:**  
75 MINUTES



**TOUR START:** Academy Park



**Proposed Gateway:**  
NE corner of Academy Park



**Proposed Bike Facility:**  
Protected cycle track along Center Street



**Trail Nexus @ 4th Street:**  
Connections to Artpark + Village of Youngstown



**Proposed Bike Facility:**  
Multi-use path along Academy Park



**Trail Nexus @ S. 9th Street:**  
Connections to Artpark + Scenic Parkway Trail



**Proposed Bike Facility:**  
Bike lanes along S. 9th Street



**TOUR END:** Academy Park

